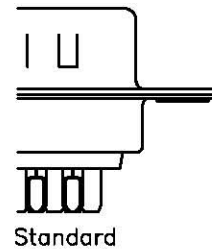
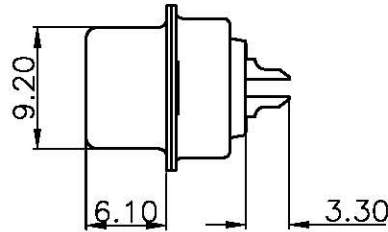
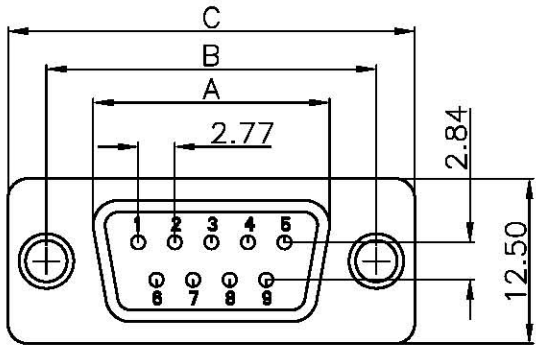


REV.	DESCRIPTION	DRAWN	CHECKED	APPROVED
A	NEW RELEASE	YCH 08/27/10'	~	



NOTES:

1. ELECTRICAL CHARACTERISTICS:

- 1.1 CONTACT RESISTANCE: 20mΩ Max. INITIAL.
- 1.2 DIELECTRIC WITHSTANDING VOLTAGE: 500V AC(rms) FOR 1 MINUTE.
- 1.3 INSULATION RESISTANCE: 1000MΩ Min.

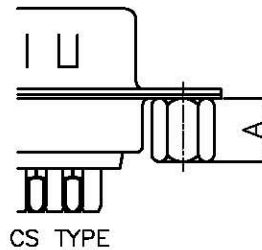
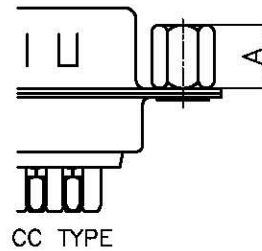
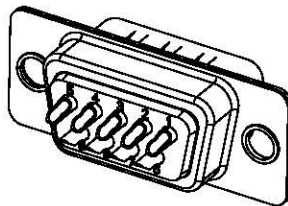
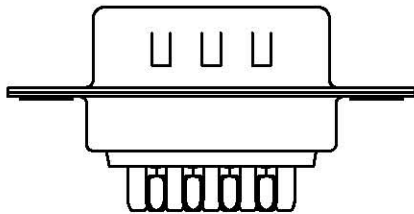
2. ENVIRONMENT CHARACTERISTICS:

- 2.1 OPERATING TEMPERATURE: 0°C~+85°C.
- 2.2 STORAGE TEMPERATURE: -20°C~+70°C.

3. PRODUCT NUMBER CODE:

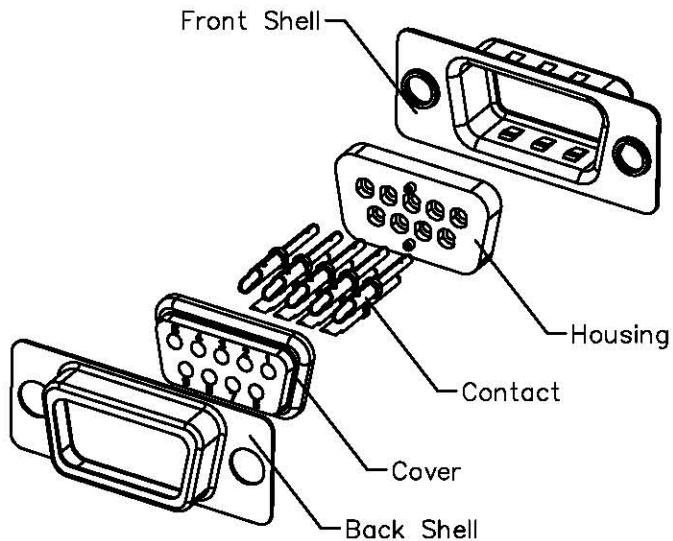
DS1033-10 - X X X X X X X

- SCREW DIM. A
- S: Standard(W/O nut)
- 1: 5.00
- 2: 3.00
- 3: 5.20
- 4: 4.80
- 5: 5.80
- 6: 4.00
- SCREW TYPE
- S: Standard(W/O nut)
- 1: CC TYPE
- 2: CS TYPE
- CONTACT PLATING
- 8: FULL GOLD FLASH
- 0: SELECTIVE GOLD FLASH
- 6: FULL TIN
- J: SELECTIVE 5u" GOLD
- SHELL PLATING
- T: FRONT & BACK SHELL Tin
- N: FRONT SHELL Nickel, BACK SHELL Tin
- HOUSING COLOR
- B: BLACK
- W: WHITE
- U: BLUE
- CONNECTOR TYPE
- M: Male
- No.OF CONTACTS
- 09: 9pos.
- 15: 15pos.
- 25: 25pos.
- 37: 37pos.



Dimension

Position	A±0.2	B±0.2	C±0.3
9	17.90	24.99	30.80
15	26.50	33.32	39.14
25	40.00	47.04	53.04
37	56.50	63.50	69.32



GENERAL TOLERANCE		ANGLE TOLERANCE	
X.	±0.60	X.	±5'
.X	±0.38	.X	±3'
.XX	±0.25	.XX	±2'

DRAWING TYPE	CUSTOMER		
SCALE	1:1	SHEET	1 OF 1
DRAWING NO.	C-DS1033-10-XXXXXXX-A		

PROJECTION	TITLE
UNITS	D-SUB MALE SOLDER TYPE
SHEET SIZE	2 INSULATOR TYPE
	SERIES DS1033-10 SERIES

广东中南电子电器有限公司

http://www.zn-cn.com