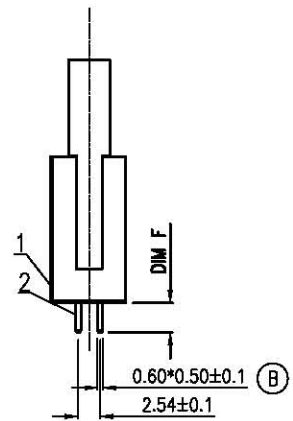
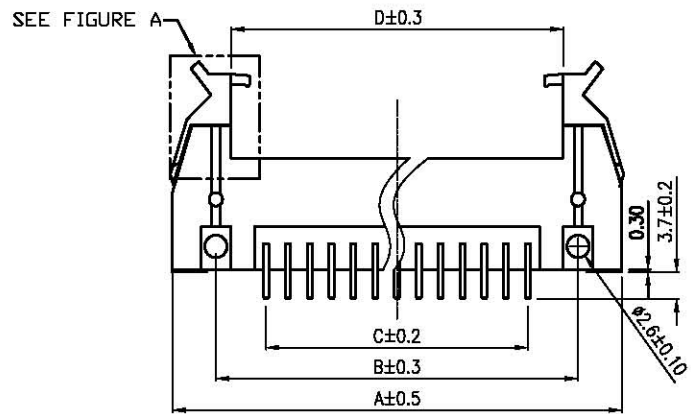
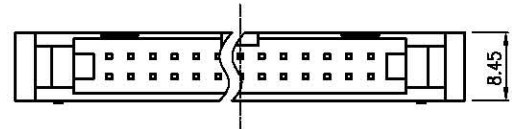


REV.	DESCRIPTION	DRAWN	CHECKED	APPROVED
A	NEW RELEASE	LJC 04/27/05'	~	卢金春
B	图面绘制错误	LL 10/29/06'	~	卢金春
C	整理图面	YCH 04/24/08'	~	

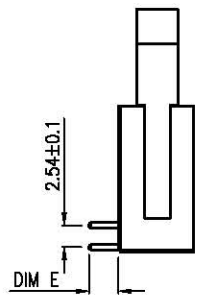
NOTES:

- ELECTRICAL CHARACTERISTICS:
 - CONTACT RESISTANCE: 20mΩ Max. INITIAL.
 - DIELECTRIC WITHSTANDING VOLTAGE: 500V AC(rms) FOR 1 MINUTE.
 - INSULATION RESISTANCE: 1000MΩ Min.
- ENVIRONMENT CHARACTERISTICS:
 - OPERATING TEMPERATURE: 0°C~+85°C.
 - STORAGE TEMPERATURE: -20°C~+70°C.
- PRODUCT NUMBER CODE: DS1011-01- X X X X X X

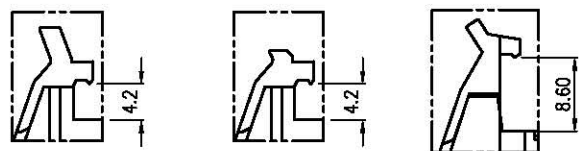
- LOCK DIM.
 - 8: 8.60mm(standard latch)
 - 2: 4.20mm(short latch)
 - S: 4.2mm(special latch)
- HOUSING COLOR
 - B: BLACK
 - A: GRAY
- CONTACT PLATING
 - Ti: SELECTIVE GOLD FLASH
 - Si: FULL GOLD FLASH
- HOUSING TYPE
 - S: SMALL LATCH HOUSING
- MOUNTING TYPE
 - S: STRAIGHT
 - R: R/A
- No.OF CONTACTS
 - 10 14 16 20 26 30
 - 34 40 50 60 64



V/T TYPE



R/A TYPE



SPECIL LATCH SHORT LATCH STANDARD LATCH

FIGURE A

AVAILABLE DIMENSION TABLE

No.of Contacts	10	14	16	20	26	30	34	40	50	60	64
A	31.92	37.00	38.54	44.62	52.24	57.32	62.40	70.02	82.72	95.42	100.50
B	21.72	26.80	29.34	34.42	42.04	47.12	52.20	59.82	72.52	85.22	90.30
C	10.16	15.24	17.78	22.86	30.48	35.56	40.64	48.26	60.96	73.66	78.74
D	18.22	23.30	25.84	30.92	38.54	43.62	48.70	56.32	69.02	81.72	86.80

Latch Type	DIM.	E	F
Short Latch		3.40	3.70
Specil Latch		3.40	3.70
Long Latch		3.40	3.70

GENERAL TOLERANCE		ANGLE TOLERANCE	
X.	±0.60	X.	±5'
.X	±0.38	.X	±3'
.XX	±0.25	.XX	±2'

PROJECTION	TITLE
UNITS	SHOUDED HEADER PITCH 2.54mm
SHEET SIZE	SERIES DS1011-01 SERIES

SMALL LATCH HOUSING

2	CONTACT	COPPER ALLOY	GOLD PLATED	DRAWING TYPE	CUSTOMER		
1	HOUSING	THERMOPLASTIC	UL 94 V-0	SCALE	1:1	SHEET	1 OF 1
ITEM	PART NAME	PART NO.	MATERILAS	FINISHED	DRAWING NO.	C-DS1011-01-XXSXXX	

广东中南电子电器有限公司

www.zn-cn.com