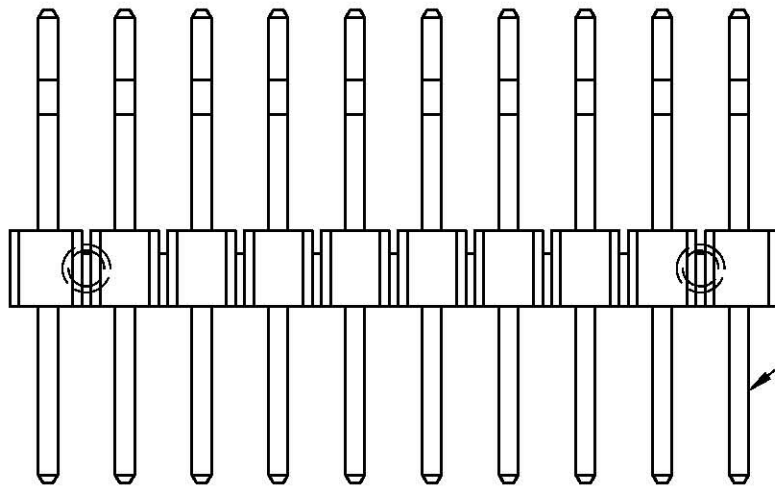


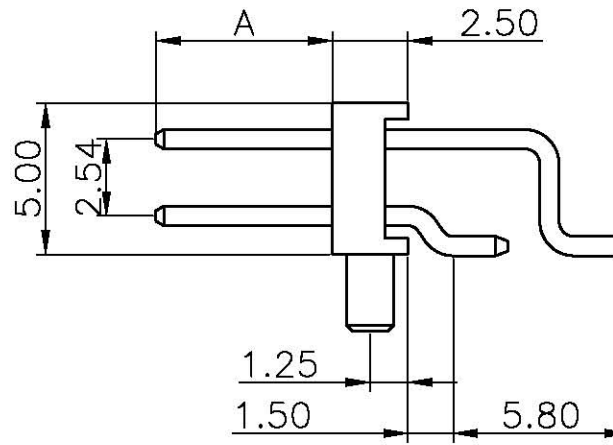
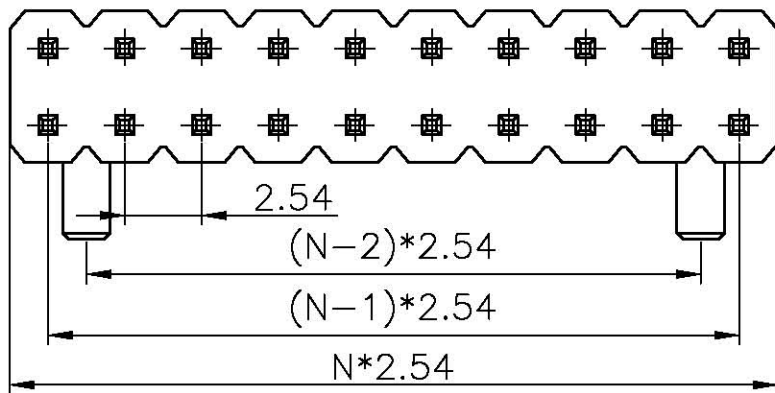
REV.	DESCRIPTION	DRAWN	CHECKED	APPROVED
A	NEW RELEASE	YCH 12/10/07'	~	

NOTES:

- MATERIAL
 - INSULATOR:THERMOPLASTIC(UL 94V-0).
 - CONTACT MATERIAL: COPPER ALLOY.
- SPECIFICATION
 - CURRENT RATING:1.5 A.
 - INSULATION RESISTANCE:1000MΩ Min.
 - DIELECTRIC WITHSTANDING:600VAC.
 - CONTACT RESISTANCE:20mΩ Max.
 - OPERATING TEMPERATURE:-45°C TO +110°C.
- PRODUCT NUMBER CODE:
DS1022-10 - X X X X



SQ PIN0.64



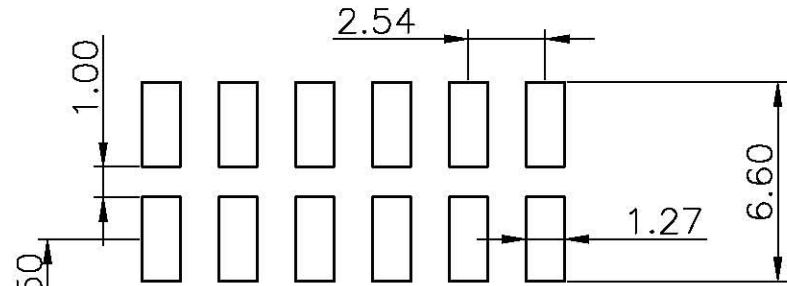
Dim A type

1:	5.84	11:	
2:		12:	
3:		13:	
4:		14:	
5:		15:	
6:		16:	
7:		17:	
8:		18:	
9:		19:	
10:		20:	

CONTACT PLATING
8: Full gold flash
6: Full Tin

MOUNTING TYPE
S: SMT TYPE

No.OF CONTACTS
2*2-2*40



RECOMMEND PCB LAYOUT
(TOLERANCE=±0.05)

GENERAL TOLERANCE		ANGLE TOLERANCE	
X.	±0.60	X.	±5'
.X	±0.38	.X	±3'
.XX	±0.25	.XX	±2'

DRAWING TYPE	CUSTOMER		
SCALE	1:1	SHEET	1 OF 1
DRAWING NO.	C-DS1022-10-XXXXX		

PROJECTION		TITLE	PIN HEADER PITCH 2.54mm	
UNITS	mm		R/A SMT TYPE W/ POST	
SHEET SIZE	A4	SERIES	DS1022-10 SERIES	