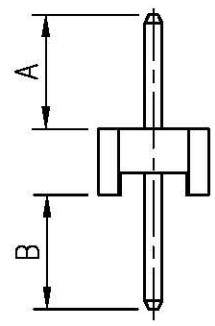
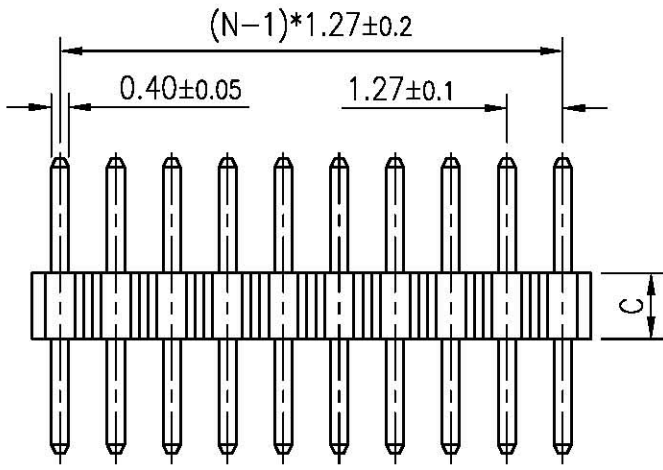
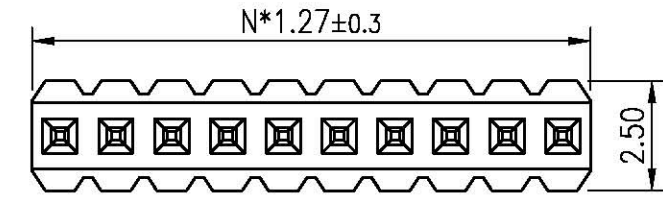


REV.	DESCRIPTION	DRAWN	CHECKED	APPROVED
A	NEW RELEASE	YCH 08/11/07'	~	



- NOTES:
- MATERIAL
 - INSULATOR:PA-46 (UL 94V-0).
 - CONTACT MATERIAL:COPPER ALLOY.
 - SPECIFICATION
 - CURRENT RATING:1.0 Amp.
 - INSULATION RESISTANCE:500MΩ Min.
 - DIELECTRIC WITHSTANDING:300VAC.
 - CONTACT RESISTANCE:20mΩ Max.
 - OPERATING TEMPERATURE:-40°C TO+105°C.

3. PRODUCT NUMBER CODE:
 DS1031-01 - X X X X X X X X

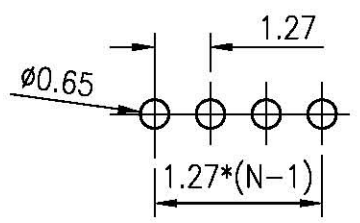
DIM.A B TYPE
 1: TYPE 1
 HOUSING HEIGHT(DIM. C)
 1: 1.00mm
 2: 1.50mm
 3: 2.00mm
 MOUNTING TYPE
 V: VERTICAL TYPE
 HOUSING COLOR
 B:BLACK
 CONTACT PLATING
 8: FULL GOLD FLASH
 CONNECTOR TYPE
 P:PLUG
 No.OF CONTACTS
 1*1-1*40

N:NUMBER OF CONTACTS

TYPE	DIM A	DIM B
1	2.60	2.60
2		
3		
4		
5		
6		
7		
8		
9		

18		
19		
20		
21		
22		
23		
24		
25		

10		
11		
12		
13		
14		
15		
16		
17		



RECOMMEND PCB LAYOUT(TOLERANCE=±0.05)

GENERAL TOLERANCE		ANGLE TOLERANCE		PROJECTION	TITLE
X.	±0.60	X.	±5'	mm	1.27mm PITCH PIN HEADER SINGLE ROW STRAIGHT
.X	±0.38	.X	±3'		
.XX	±0.25	.XX	±2'		
DRAWING TYPE		CUSTOMER		SHEET SIZE	SERIES
SCALE		1:1		A4	DS1031-01 SERIES
DRAWING NO.		C-DS1031-01-XXXXXXX		SHEET 1 OF 1	