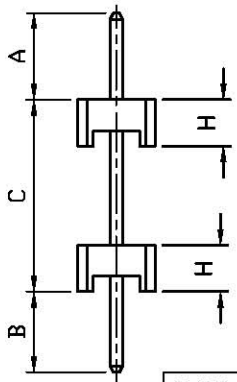
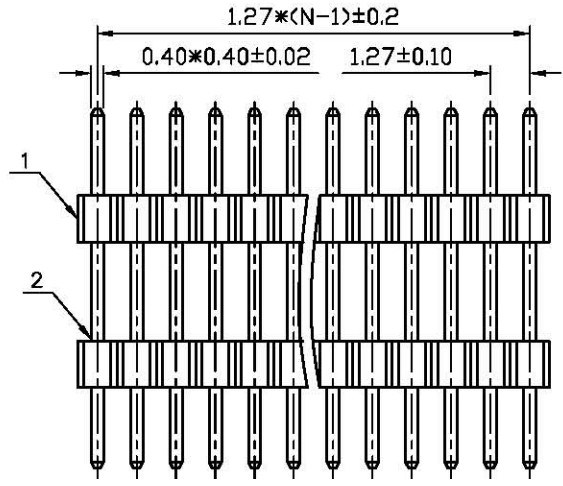
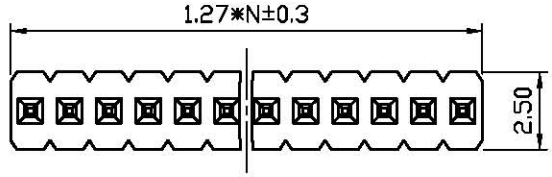
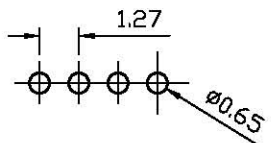


REV.	DESCRIPTION	DRAWN	CHECKED	APPROVED
A	NEW RELEASE	LJH 06/22/05'		



TYPE	DIM A	DIM B	DIM C
1	2.80	2.60	6.20

N:No.OF CONTACTS



RECOMMEND PCB LAYOUT(TOLERANCE=±0.05)

NOTES:

- MATERIAL
 - INSULATOR:PA-46(UL 94V-0).
 - CONTACT MATERIAL:COPPER ALLOY.
- SPECIFICATION
 - CURRENT RATING:1.0 Amp.
 - INSULATION RESISTANCE:1000MΩ Min.
 - DIELECTRIC WITHSTANDING:300VAC.
 - CONTACT RESISTANCE:50mΩ Max.
 - OPERATING TEMPERATURE:-40°C TO+105°C.
- PART NUMBER: DS1031-04
- PRODUCT NUMBER CODE:

DS1031-04 - X X X X X X X

DIM.A B C TYPE
 1: TYPE 1
 HOUSING HEIGHT(DIM. H)
 1: 1.00mm
 2: 1.50mm
 3: 2.00mm
 MOUNTING TYPE
 V: VERTICAL TYPE
 HOUSING COLOR
 B:BLACK
 CONTACT PLATING
 8: FULL GOLD FLASH
 CONNECTOR TYPE
 P:PLUG
 No.OF CONTACTS
 1*1-1*40
 SERIES No.
 DS1031-04

GENERAL TOLERANCE		ANGLE TOLERANCE	
X	±0.60	X	±5'
.X	±0.38	.X	±3'
.XX	±0.25	.XX	±2'

PROJECTION	UNIT	TITLE
	mm	BOARD SPACER SINGLE ROW
SHEET SIZE	A4	SERIES DS1031-04 SERIES

2	CONTACT		COPPER ALLOY		GOLD PLATED	DRAWING TYPE	CUSTOMER		
1	HOUSING		THERMOPLASTIC		UL 94 V-0	SCALE	1:1	SHEET	1 OF 1
ITEM	PART NAME	PART NO.	MATERILAS		FINISHED	DRAWING NO.	C-DS1031-04-XXXXXXX		