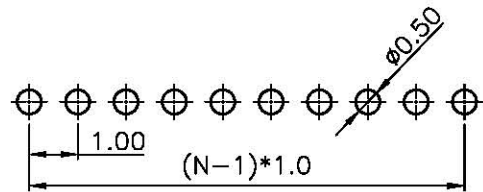
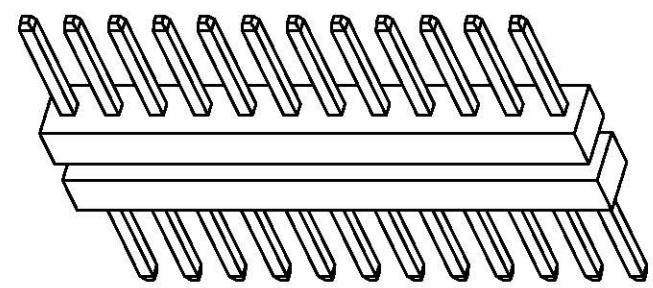
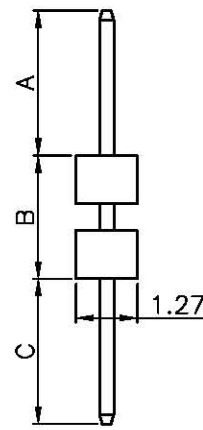
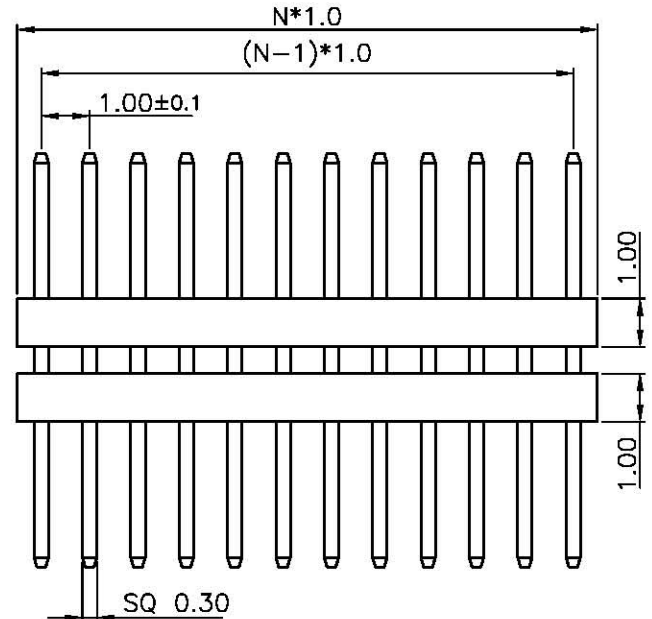


REV.	DESCRIPTION	DRAWN	CHECKED	APPROVED
A	NEW RELEASE	YCH 03/24/09	~	



RECOMMEND PCB LAYOUT(TOLERANCE=±0.05)

NOTES:

- MATERIAL
 - INSULATOR:PA-46(UL 94V-0).
 - CONTACT MATERIAL:COPPER ALLOY.
- SPECIFICATION
 - CURRENT RATING:1.0 Amp.
 - INSULATION RESISTANCE:500MΩ Min.
 - DIELECTRIC WITHSTANDING:600VAC.
 - CONTACT RESISTANCE:20mΩ Max.
 - OPERATING TEMPERATURE:-45°C TO +110°C.
- PART NUMBER: DS1031-18
- PRODUCT NUMBER CODE:
 DS1031-18 - X X X X X X
 DIM.A B TYPE
 1: TYPE 1
 MOUNTING TYPE
 V: VERTICAL TYPE
 HOUSING COLOR
 B:BLACK
 CONTACT PLATING
 8: FULL GOLD FLASH
 CONNECTOR TYPE
 P:PLUG
 No.OF CONTACTS
 1*1-1*40

TYPE	DIM A	DIM B	DIM C
1	3.00	2.55	3.00
2			
3			
4			
5			
6			
7			
8			
9			
10			

GENERAL TOLERANCE	ANGLE TOLERANCE	PROJECTION		TITLE	SINGLE ROW PIN HEADER
X. ±0.60	X. ±5°	UNITS	mm	PITCH 1.00mm STACK V/T TYPE	
.X ±0.38	.X ±3°	SHEET SIZE	A4	SERIES	DS1031-18 SERIES
.XX ±0.25	.XX ±2°				
DRAWING TYPE	CUSTOMER				
SCALE	1:1	SHEET	1 OF 1		
DRAWING NO.	C-DS1031-18-XXXXXX				